

SHAKER MACHINE for parts Alignment/Assembly

ALIGNING MACHINE WITH VERTICAL VIBRATION SHAKER MACHINE "SVT-02"

• [FEATURES]

1. Vertical vibration aligning machine with swing mechanism.
2. Front-rear swinging makes workpieces move so smoothly.
3. Programming by touch panel can select the best operation pattern which is suitable for aligning the required parts.
4. Aligning program can be reserved up to 40 kinds.
Preserved data can be easily brought back ,
then the plural number of alignment can be easily done.

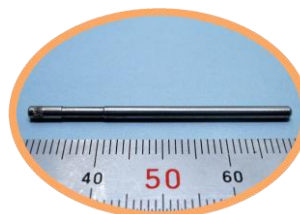
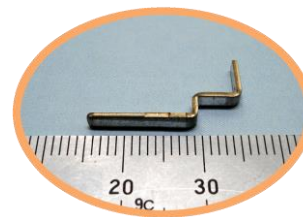
• [BASIC SPECIFICATION]

VIBRATION TYPE	VERTICAL ELLIPTIC MOTION
AMPLITUDE(mm)	0.3~1.2 * 1
LOADABLE PALLET Q'TY	1
MAX PALLET SIZE (mm)	400(W) × 400(D)
MAX PALLET WEIGHT (kg)	10
SWING MECHANISM (FORE & BACK)	AIR CYLINDER
TILTING ANGLE (°)	MAX 3.4
AIR SUPPLY PRESSURE (KPa)	460~530
VOLTAGE RATED (VAC)	100 or 200 * 2
FREQUENCY RATED (Hz)	50/60
POWER CONSUMPTION (VA)	MAX 300
CONTROLLER	PLC , INVERTER
OPERATION (OPR)	TOUCH PANEL , PUSH SWITCH
VIBRATION SOURCE	AC MOTOR
MAIN UNIT WEIGHT (kg)	100
SUPPORT TABLE WEIGHT (kg)	60

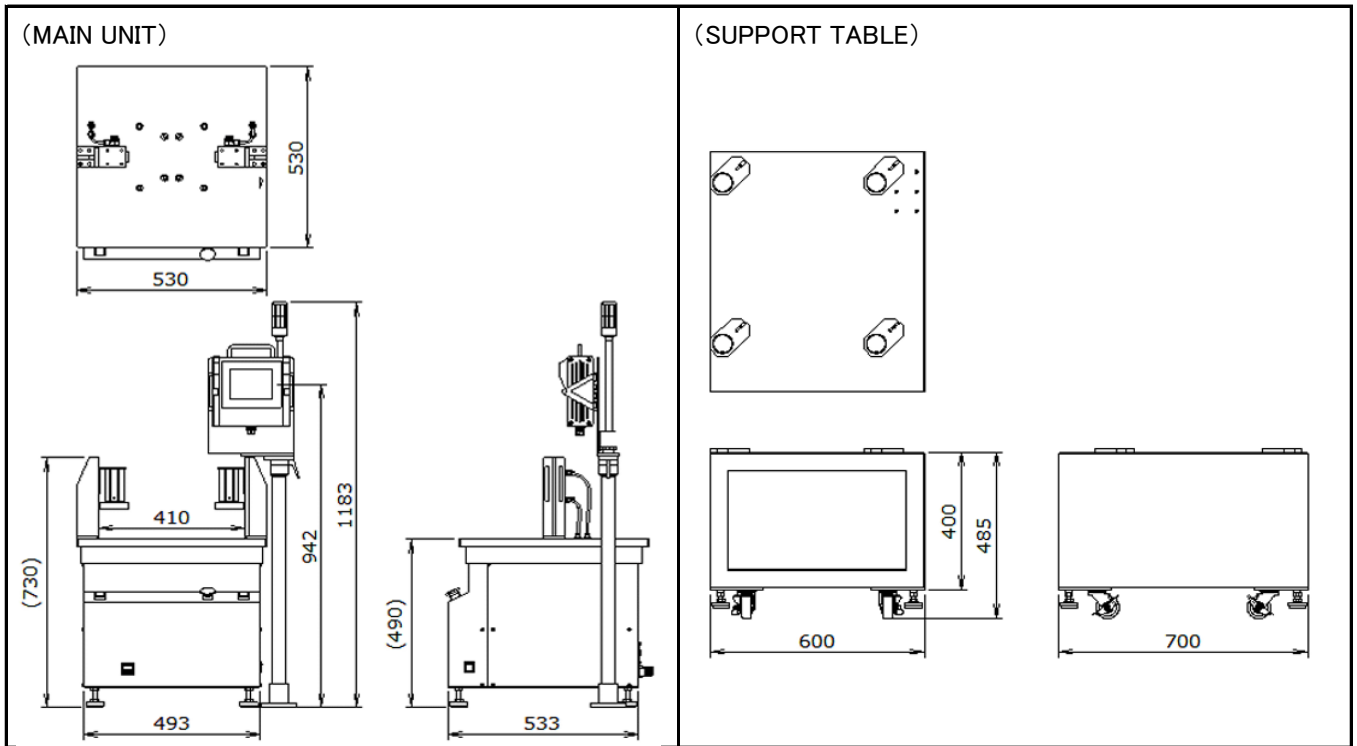
* 1 : MANUALLY VARIABLE

* 2 : SELECT EITHER 100V OR 200V WHICHEVER NEEDED

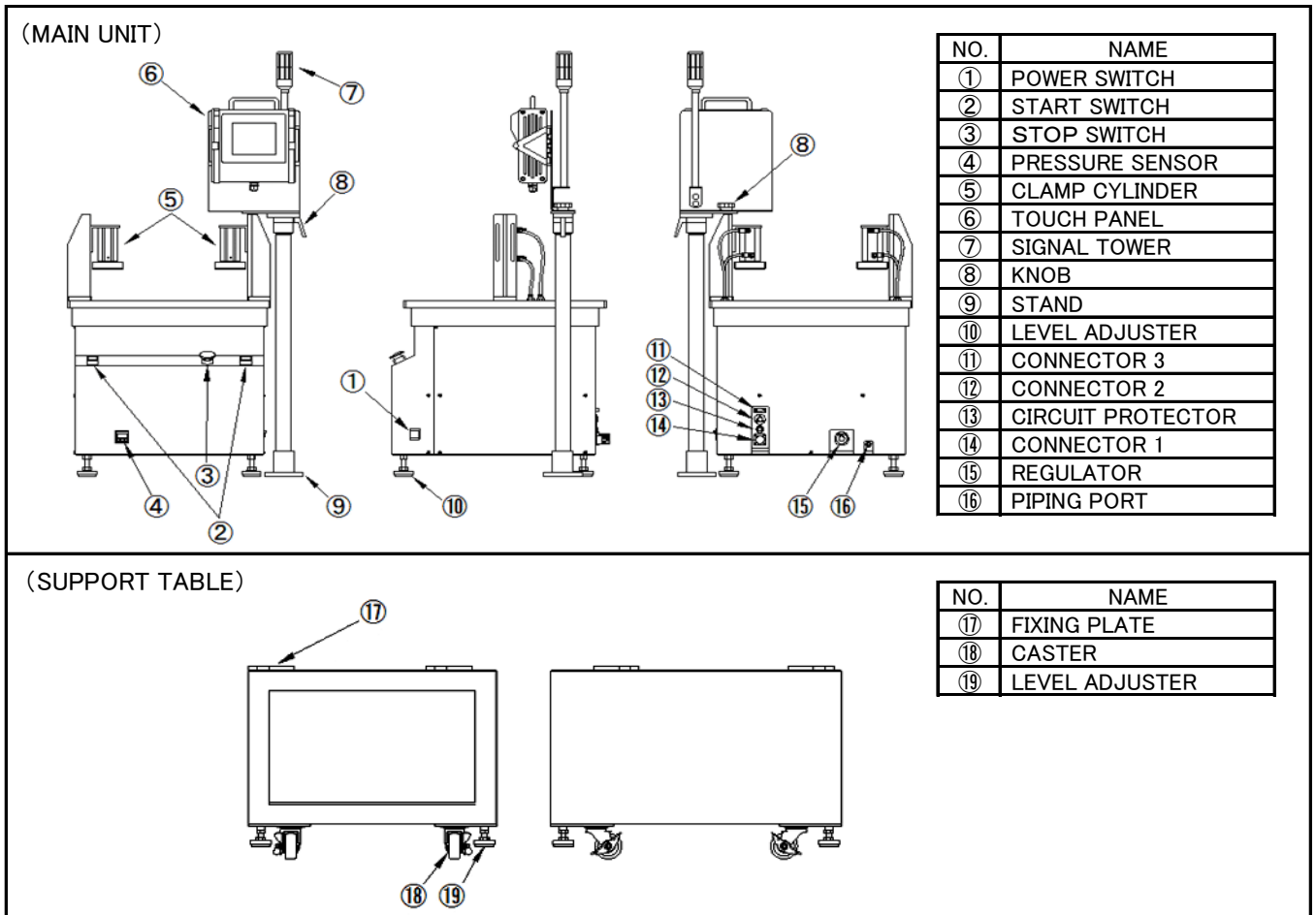
• [ALIGNMENT PARTS EXAMPLE]



▪ [OUTER DIMENSIONAL DRAWING] UNIT(mm)



▪ [EACH PART NAME]



SHAKETRON LTD.

7-4-26 Ohmori-Nishi, Ohta-Ku, Tokyo Japan 143-0015

Phone : +81-3-3765-7963 / Fax : +81-3-3765-7922 / MAIL : info@shaketrone.com