

# SHAKER MACHINE for parts Alignment/Assembly

## ALIGNING MACHINE WITH VERTICAL VIBRATION SHAKER MACHINE "LSV-02"

### • [FEATURES]

1. Vertical vibration aligning machine without swing mechanism but low cost type.
2. Good for relatively simple shaped workpieces and small or midium sized pallet.
3. Operation can be done by volume and timer.

### • [BASIC SPECIFICATION]

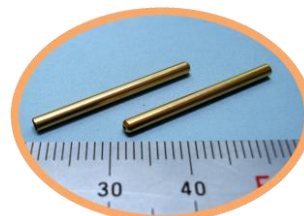
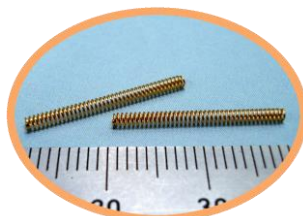
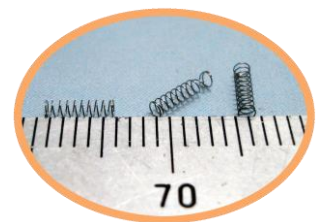
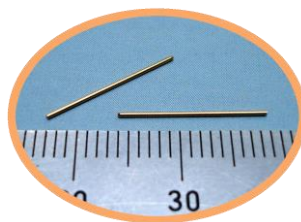
VIBRATION TYPE	VERTICAL ELLIPTIC MOTION
AMPLITUDE(mm)	0.3~1.5 * 1
LOADABLE PALLET Q'TY	1
MAX PALLET SIZE (mm)	300(W) × 300(D)
MAX PALLET WEIGHT (kg)	10
SWING MECHANISM (FORE & BACK)	-
TILTING ANGLE ( ° )	-
AIR SUPPLY PRESSURE (KPa)	460~530
VOLTAGE RATED (VAC)	100 or 200 * 2
FREQUENCY RATED (Hz)	50/60
POWER CONSUMPTION (VA)	MAX 300
CONTROLLER	PLC , INVERTER , TIMER
OPERATION (OPR)	PUSH SWITCH , EXTERNAL VOLUME
VIBRATION SOURCE	AC MOTOR
MAIN UNIT WEIGHT (kg)	43
SUPPORT TABLE WEIGHT (kg)	65

\* 1 : MANUALLY VARIABLE

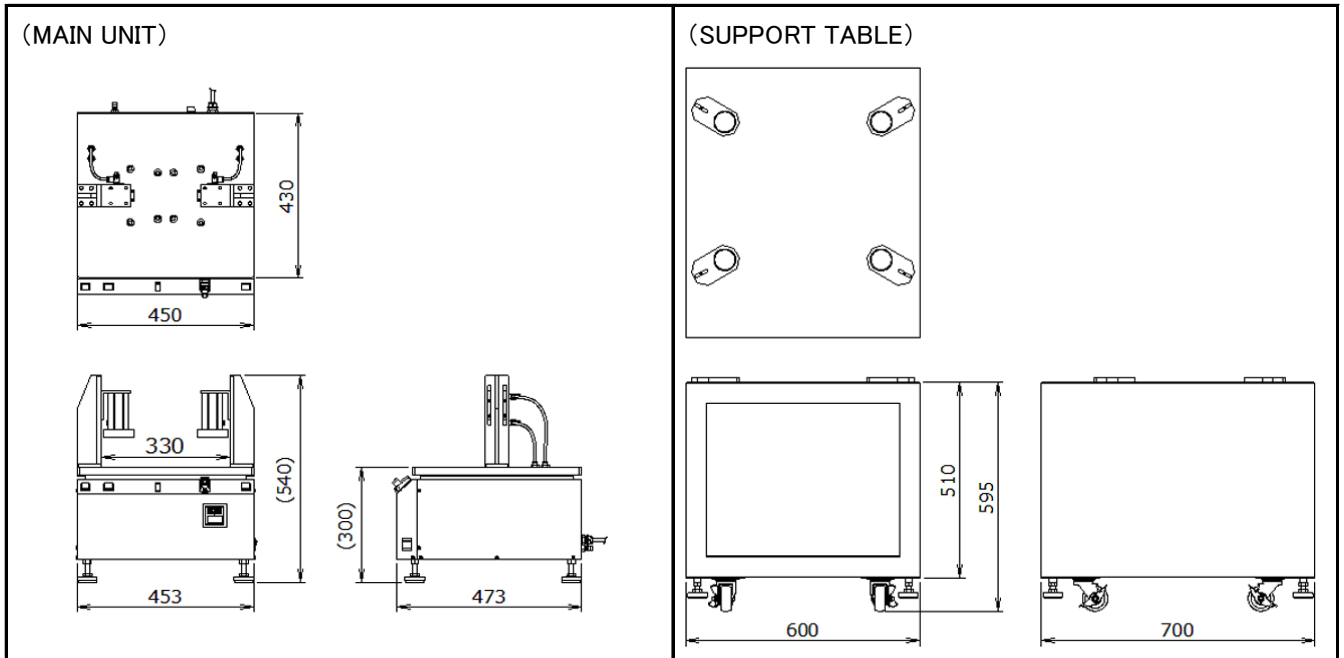
\* 2 : SELECT EITHER 100V OR 200V WHICHEVER NEEDED



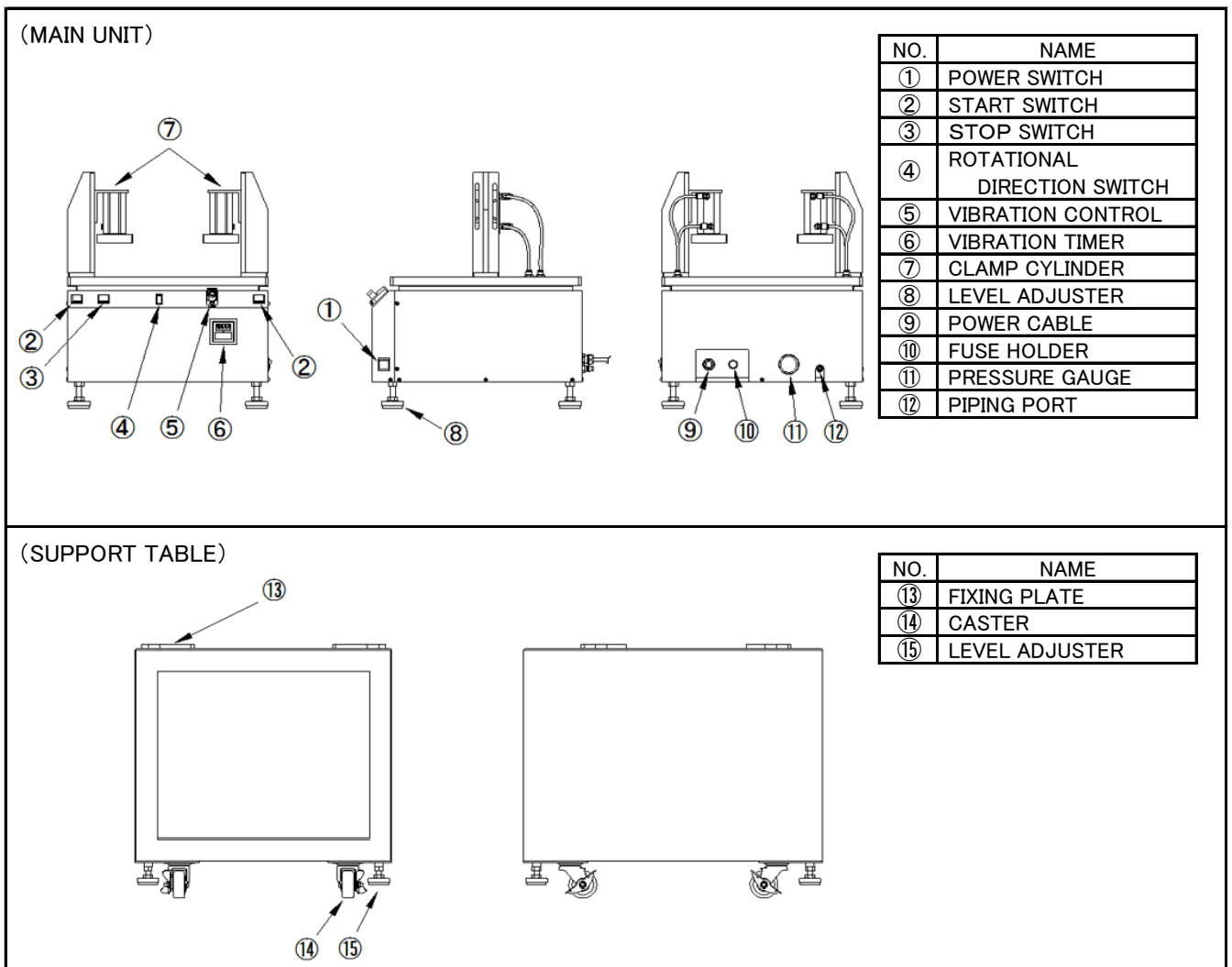
### • [ALIGNMENT PARTS EXAMPLE]



• [OUTER DIMENSIONAL DRAWING] UNIT(mm)



• [EACH PART NAME]



SHAKETRON LTD.

7-4-26 Ohmori-Nishi, Ohta-Ku, Tokyo Japan 143-0015

Phone : +81-3-3765-7963 / Fax : +81-3-3765-7922 / MAIL : info@shaketrone.com