

SHAKER MACHINE for parts Alignment/Assembly

ALIGNING MACHINE WITH HORIZONTAL VIBRATION SHAKER MACHINE "LSH-02"

• [FEATURES]

1. Horizontal vibration aligning machine with swing mechanism.
2. This makes workpieces scatter and align on the pallet by setting right-left direction swing and vibration rotation/direction.
3. Operation can be done by volume and timer.

• [BASIC SPECIFICATION]

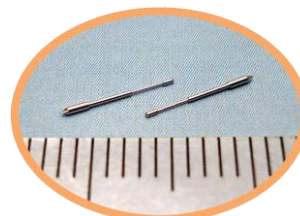
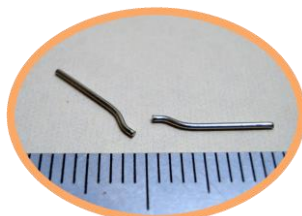
VIBRATION TYPE	HORIZONTAL ECCENTRIC MOTION
ECCENTRICITY AMOUNT (mm)	0.5~2.0 * 1
LOADABLE PALLET Q'TY	1
MAX PALLET SIZE (mm)	300(W) × 200(D)
MAX PALLET WEIGHT (kg)	2
SWING MECHANISM (LEFT & RIGHT)	AIR CYLINDER
TILTING ANGLE (°)	MAX 15
AIR SUPPLY PRESSURE (KPa)	460~530
VOLTAGE RATED (VAC)	100 or 200 * 2
FREQUENCY RATED (Hz)	50/60
POWER CONSUMPTION (VA)	MAX 300
CONTROLLER	PLC , MOTOR DRIVER , TIMER
OPERATION (OPR)	PUSH SWITCH , EXTERNAL VOLUME
VIBRATION SOURCE	DC
MAIN UNIT WEIGHT (kg)	55
SUPPORT TABLE WEIGHT (kg)	65

* 1 : MANUALLY VARIABLE

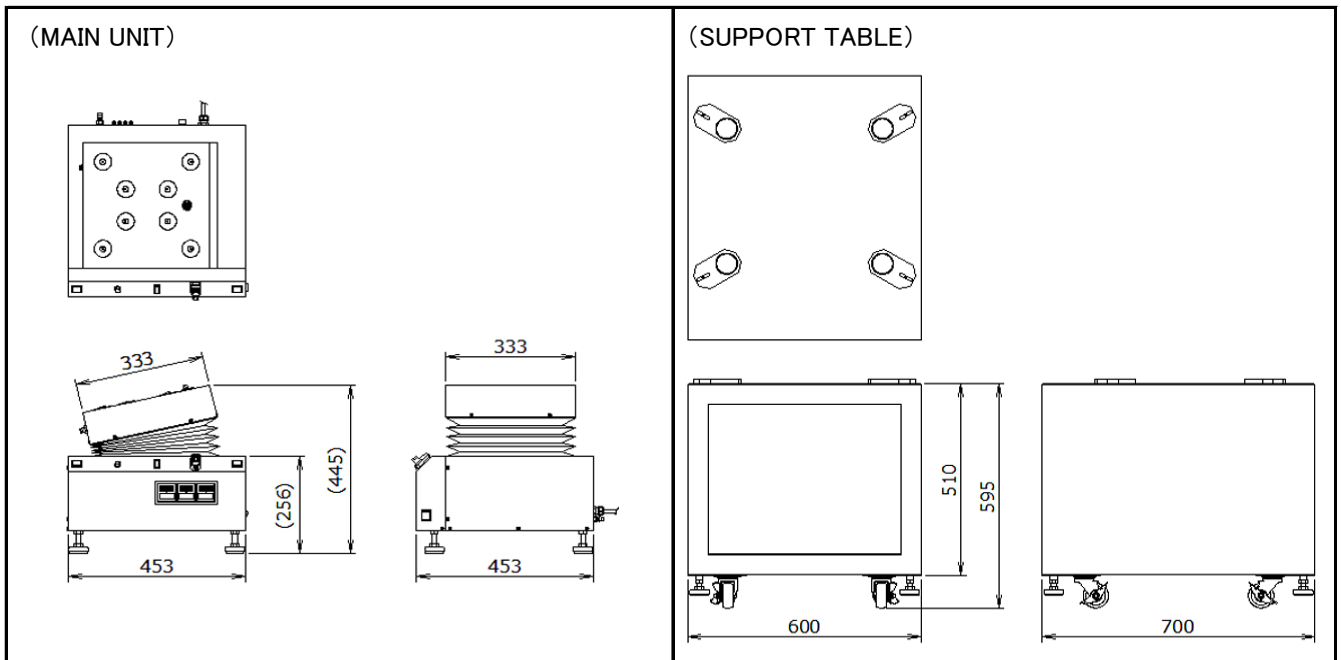
* 2 : SELECT EITHER 100V OR 200V WHICHEVER NEEDED



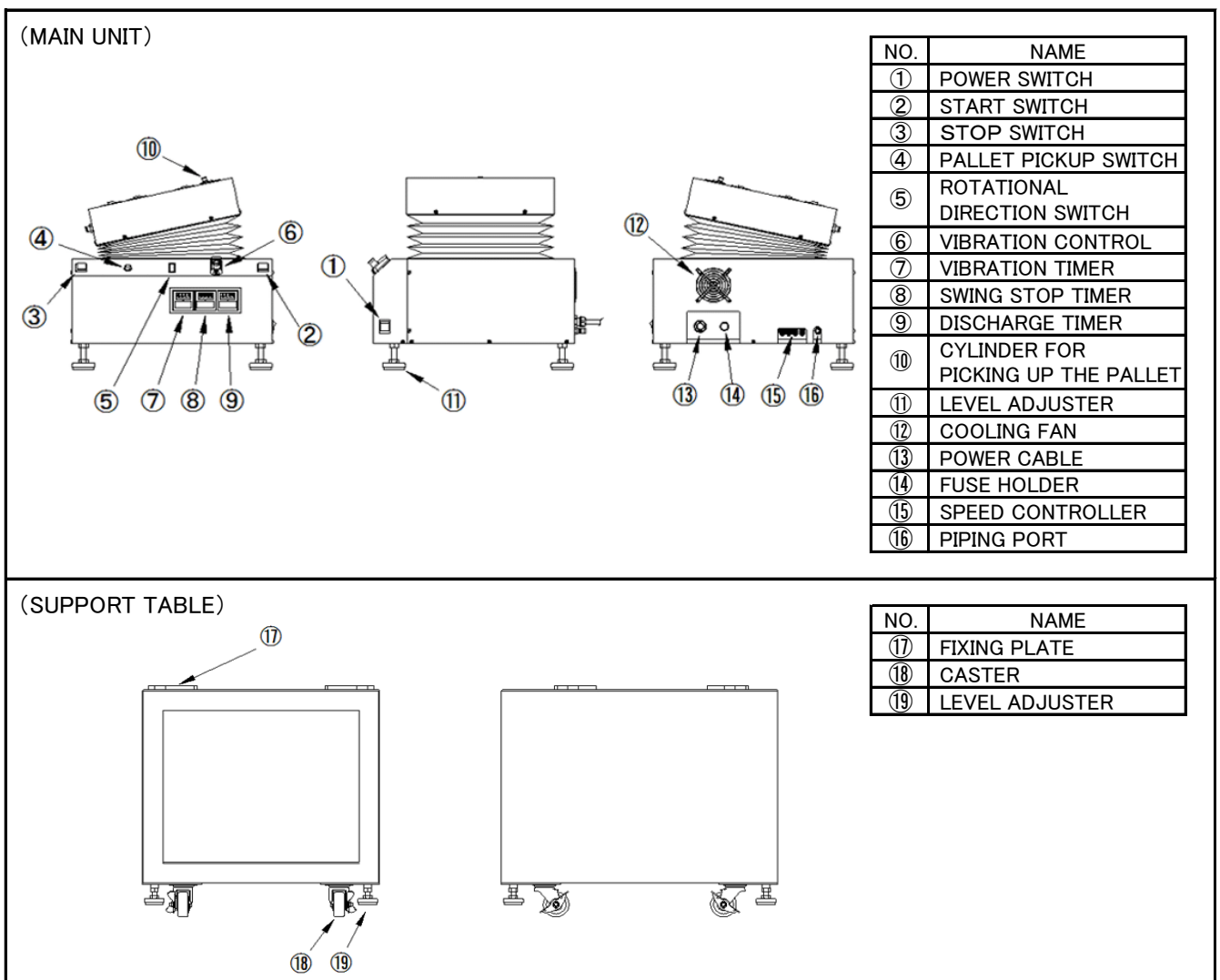
• [ALIGNMENT PARTS EXAMPLE]



• [OUTER DIMENSIONAL DRAWING] UNIT(mm)



• [EACH PART NAME]



SHAKETRON LTD.

7-4-26 Ohmori-Nishi, Ohta-Ku, Tokyo Japan 143-0015

Phone : +81-3-3765-7963 / Fax : +81-3-3765-7922 / MAIL : info@shaketrone.com